

**HALLIDAY & BAILLIE CAVITY SLIDING
PRIVACY SYSTEM FOR TIMBER SLIDERS**

Privatise a room with the Halliday & Baillie Privacy System

Very discrete emergency release mechanism

This system has been designed to carry through the same visual where you have used the HB660 standard flush pull & the HB680 but need to or wish to privatise a room.

NOTE: The absolute minimum the slider can be is 36mm.

The ideal slider thickness is 40mm, however we do provide a longer extended spindle inside each system for any further door thickness.

You simply cut this down to fit your slider.

(Sold complete ready for installation)

(see over page for line drawings)

Order Codes:

HB 690 - MATT SATIN SILVER (marine zinc coated)*

HB690B - OILED DARK BRONZE

HB690C - MIRROR CHROME

HB690N - NICKEL (stainless steel look)

Image shows the snib side, snib pushes upwards to latch into a strike plate on frame/jam side. When sliders fully hidden into cavity/pocket simply push the touch catch to bring out the handle to bring out from the space, push back into place, use pulls to slide to close position.

(see bottom image)



Image shows the discrete emergency release side. Simply put a pen or knife end into the tiny hole and push up and is disarmed.



****If chosen to use externally, this finish is treated for outdoor coastal use with normal expected maintenance programme to be in place.****

If using externally you would choose not to install release side.

NB: this may not comply with insurance key lock policies

please check your individual insurers.

<http://www.hallidaybaillie.com/>

Lock faceplate 154mm

Lock body is 73mm

Centre to snib is 55mm

Minimum Stile width for this lock is 90mm to avoid hitting any glazing as the centre measurement is 55mm the ideal stile width is 110mm

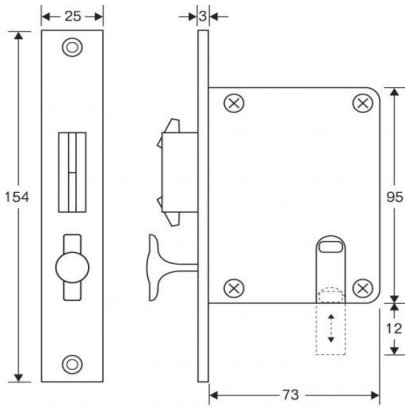


Fig.1 Lockset Dimension Drawing

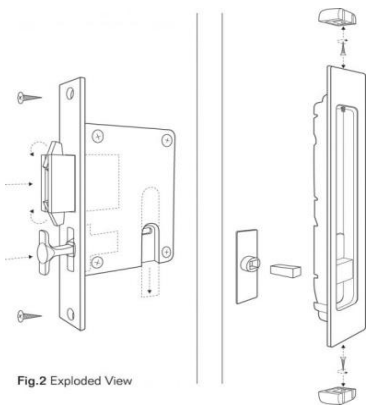
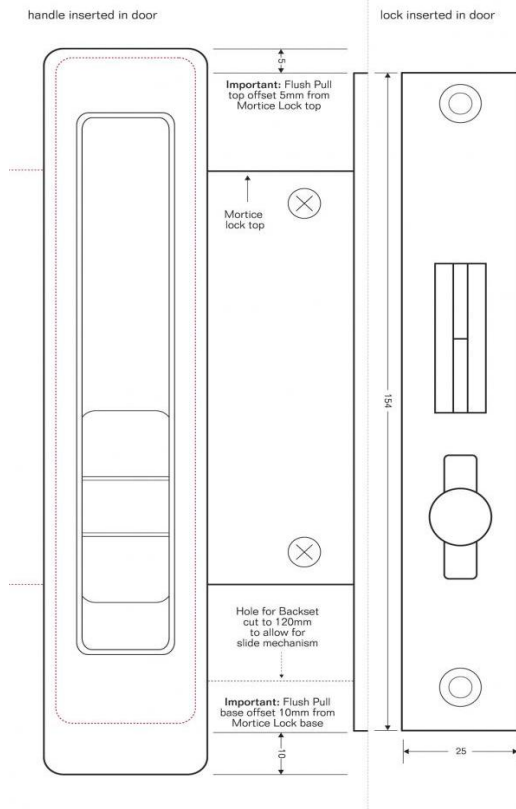


Fig.2 Exploded View



HALLIDAY & BAILLIE CAVITY SLIDING PRIVACY SYSTEM FOR TIMBER SLIDERS

Privatise a room with the Halliday & Baillie Privacy System
Very discrete emergency release mechanism

This system has been designed to carry through the same visual
where you have used the HB665 standard flush pull & the
HB680 but need to or wish to privatise a room.

NOTE: The absolute minimum the slider can be is 36mm.

**The ideal slider thickness is 40mm, however we do provide a longer
extended spindle inside each system for any further door thickness.
You simply cut this down to fit your slider.**

(Sold complete ready for installation)

(see over page for line drawings)

Order Codes:

HB 695 - PEARL SATIN SILVER (marine zinc coated)*

HB695B - OILED DARK BRONZE

HB695C - MIRROR CHROME

HB695N - NICKEL (stainless steel colour)

*Image shows the snib side, snib pushes
upwards to latch into a strike plate on
frame/jam side. When sliders fully hidden
into cavity/pocket simply push the
touch catch to bring out the
handle to bring out from the space,
push back into place, use pulls to
slide to close position.*



*Image shows the discrete emergency
release side. Simply put a pen or knife
end into the tiny hole and push up to
disarm. Image shown below is
the HB690 size.*



***If chosen to use externally, this finish is treated for outdoor**

coastal use with normal expected maintenance programme to be in place.*

If using externally you would choose not to install release side.

**NB: this may not comply with insurance key lock policies
please check your individual insurers.**

<http://www.hallidaybaillie.com/>

Centre to snib is 55mm

Maximum Stile width for this lock is 90mm to avoid hitting any glazing as the centre measurement is 55mm the ideal stile width is 110mm

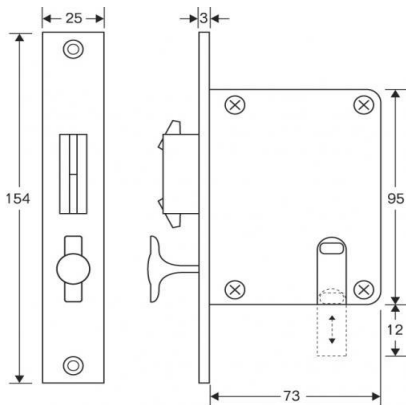


Fig.1 Lockset Dimension Drawing

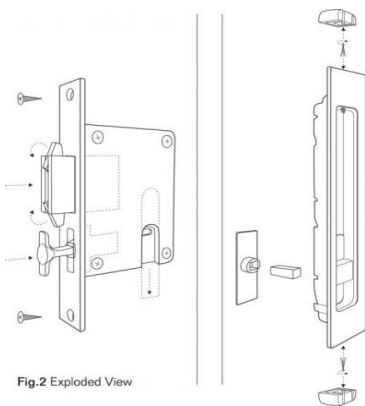


Fig.2 Exploded View

***Please note that the drawing shows our HB690 (170mm)
It is the same except for the fact that this product has
a 250mm long flush pull supplied with it.***

**HALLIDAY & BAILLIE KEY LOCK SLIDING SYSTEM
FOR TIMBER SLIDERS****ORDER CODES:**

HB630 - PEARL SATIN SILVER (marine zinc coated)*

HB630B - OILED DARK BRONZE

HB630C - MIRROR CHROME

HB630N - NICKEL (stainless steel look)

The new HB630 has a key both sides with a flush pull & snib both sides. For variations to this see codes HB632, HB633 & HB638, 636,637 (see following fact sheets)

The absolute minimum the slider thickness can be is 38mm-40mm.

With the length of the key cylinders available on the market , a slider thickness of 40, 60 or 70mm will make this system completely flush and therefore allow the slider to either travel into a cavity wall or pass over other panels, moving or fixed without te need to place a stop in your tracks. This then means you get the full door opening.
(Please note the 40mm cylinder is a 3pin system & cannot be keyed to 5 or 6pin key systems)

*For any sliders above 45mm you need to detail an extended spindle, please advise slider thickness when specifying or placing your order. This is additional.
Order code: HB631*

*** Treated for outdoor coastal use with normal expected maintenance programme to be in place.***

Product feature! - you can open and close & latch your slider without using the key!. When you want to deadlock the door, you simply key it so that the snib is locked, take out your key and voila!

*Image below is inside view
Snib the lock to latch the slider,
pull down to unlatch. To deadlock
and leave your property use key
to lock the snib from moving.*

*Image below is outside view
Snib the lock to latch the slider
pull down to unlatch. To deadlock
and leave your property use key
to lock the snib from moving.*



Lock faceplate length is 213mm

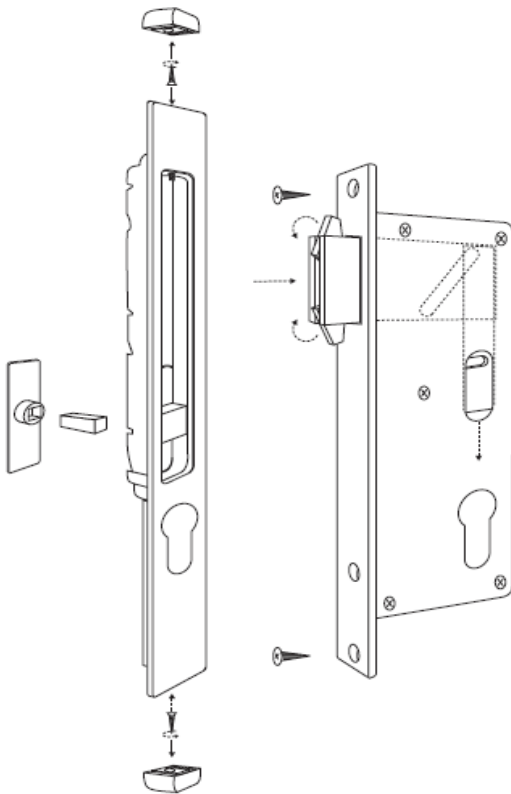
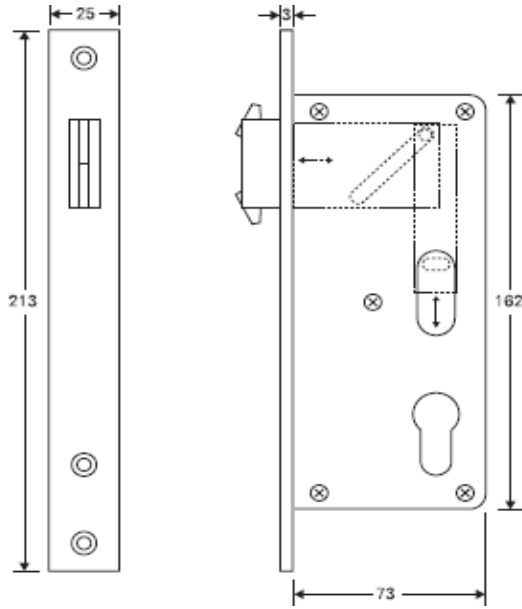
Lock body depth is 73mm

Centre to Key & snib is 55mm

Minimum Stile width for this lock is 90mm to avoid hitting the glazing

As the centre measurement is 55mm the ideal stile width is 110mm

Fig.1 Lockset Dimension Drawing





HB660	170MM
HB665	250MM
HB668	250MM

HALLIDAY & BAILLIE FLUSH PULLS

Order Codes

HB660 or HB665 - PEARL SATIN SILVER (marine zinc coated)*

HB660B or HB665B - OILED DARK BRONZE

HB660C or HB665B- MIRROR CHROME

HB660N or HB665N- NICKEL (stainless steel look)

HB660BLK or HB665BLK - Black Powdercoat

170mm long

250mm long

36mm wide

36mm wide

13mm Deep

13mm Deep

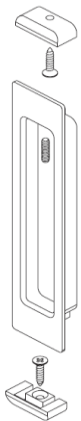
3.0mm thick plate

3.0mm thick plate



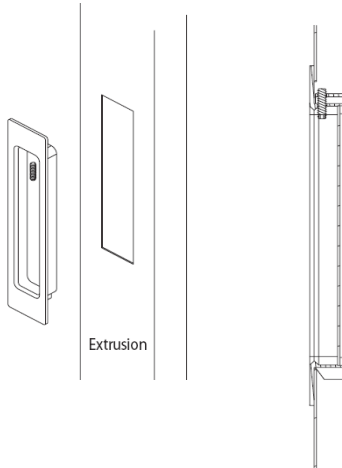
Remember to order the HB604 for timber installation.

TIMBER FIX KIT



ALUMINIUM EXTRUSION

(Kit not needed)



TIMBER KIT - HB604

If you have any queries phone to speak to our sales team

See diagram above to install kit

Remember to order the HB604 for timber installation.

HB668 SATIN SILVER (marine zinc coated)*

HB668B - OILED DARK BRONZE

HB668C- MIRROR CHROME

HB668N- NICKEL (stainless steel look)

HB668BLK - Black Powdercoat

This flush pull has evolved from our new sliding key lock systems HB630, 632, 633 & 638. It allows you to order this as a separate product or to match the other side to the sliding locks for double sliders.

ie: lock one side to lock into 2nd slider with plain flush pulls on the other side.

250MM X 36MM WIDE

Finger area inside 128mm



TIMBER KIT - HB604

If you have any queries phone to speak to our sales team

**** Treated for outdoor coastal use with normal expected maintenance programme to be in place.****

<http://www.hallidaybaillie.com/>

**HALLIDAY & BAILLIE KEY LOCK SLIDING SYSTEM
FOR TIMBER SLIDERS**

ORDER CODES:

HB638 - PEARL SATIN SILVER (marine zinc coated)*

HB638B - OILED DARK BRONZE

HB638C - MIRROR CHROME

HB638N - NICKEL (stainless steel look)

The new HB638 has a key both sides with a flush pull & snib both sides but with the addition of a finger pull of the forend of the lock body.

For lock variations see HB630,632, & HB633

The absolute minimum the slider thickness can be is 38mm-40mm.

With the length of the key cylinders available on the market , a slider thickness of 40, 60 or 70mm will make this system completely flush and therefore allow the slider to either travel into a cavity wall or pass over other panels moving or fixed without having to place a stop in your tracks. This then means you get the full door opening.

(Please note the 40mm cylinder is a 3pin system & cannot be keyed to 5 or 6pin key systems)

For any sliders above 45mm you need to detail an extended spindle, please advise slider thickness when specifying or placing your order. This is additional.

Order code: HB631

*** Treated for outdoor coastal use with normal expected maintenance programme to be in place.***

Product feature! - you can open and close & latch your slider without using the key!. When you want to deadlock the door, you simply key it so that the snib is locked, take out your key and voila!

Image below is inside view

Snib the lock to latch the slider, pull down to unlatch. To deadlock and leave your property use key to lock the snib from moving.

Image below is outside view

Snib the lock to latch the slider pull down to unlatch. To deadlock and leave your property use key to lock the snib from moving.



Lock faceplate length is 213mm

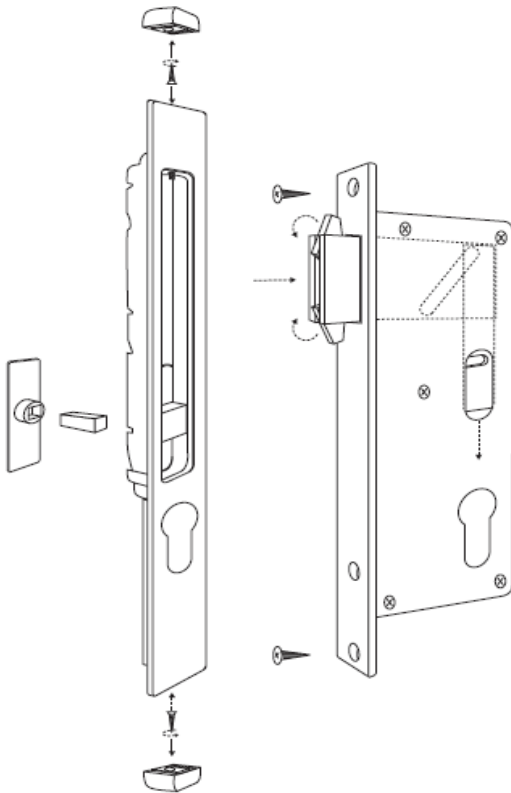
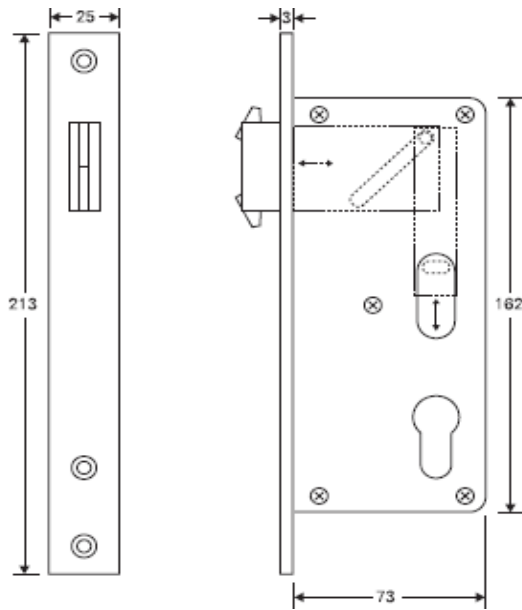
Lock body depth is 73mm

Centre to Key & snib is 55mm

Minimum Stile width for this lock is 90mm to avoid hitting the glazing

As the centre measurement is 55mm the ideal stile width is 110mm

Fig.1 Lockset Dimension Drawing



HB680 - POP OUT PULL RING FOR SLIDING DOORS



The flush pulls shown above are the HB660 170mm, other size options are the HB668 at 225mm or the HB665 being 250mm long, see flush pull brochure.

Ideal for use on both timber & Aluminium cavity sliders. Suitable for residential and commercial applications, inside & out.

Body size is 48mm deep x 100mm long

Faceplate is 170mm long x 19mm

length of the pop out is 75mm

(Note faceplate is now 170mm long)

