

Sliding and Pocket Door Hardware

available in the US through

index-d

877-777-0592
www.index-d.com

- Premium quality pocket door locks and trim offered in 2 ½", 2 ¾", 3 ¾", 5" and 6" backsets—custom backsets also available
- For use with various door thicknesses (starting at 1 3/8")
- Heavy duty capacity, smooth operating with superior form and function
- Available in pulls only (2000 series), lock only (2001 series) or combination lock/pull (2002 series)
- Unique aesthetic trim styles to choose from
- Standard and custom finishes available



2000 Pocket Door Pull



Spring loaded edge pull

PUSH BUTTON
PROJECTS PULL (as shown)



CASE:

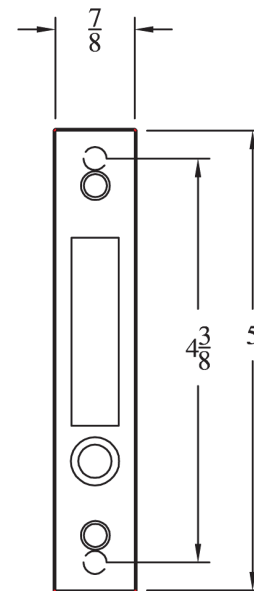
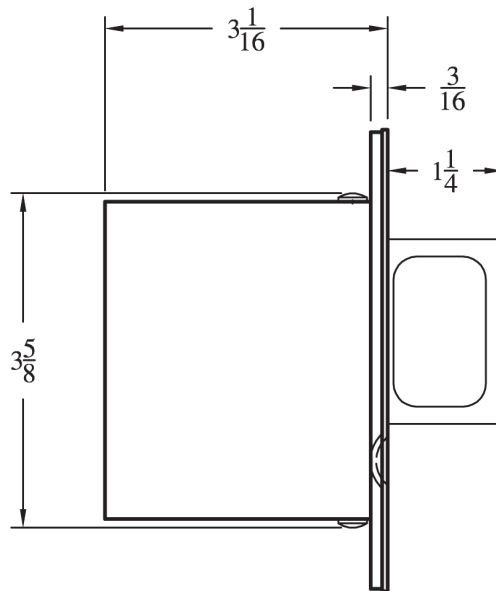
Heavy Gauge, Wrought
(11/16" thick)

PULL:

1/2" Thick—1 1/4" throw

ARMOR FRONT:

Wrought brass, bronze or
stainless steel.



* Custom 1" wide armor front available

SUGGESTED TRIM FOR INSIDE AND OUTSIDE: A2002B, O2002B, N2002B, or S2002B

In addition to the above flush pulls (also available with concealed screws), please refer to our 24R and 24S flush cups for more trim options.

1 Annie Place • Stamford, CT 06902 • P: 203.348.8865 • F: 203.348.5234 • E: sales@accuratelockandhardware.com

MADE IN USA

200I Sliding Door Lock (#200ISDL)



Various backsets to meet your requirements

Please specify
2 1/2", 2 3/4", 3 3/4", 5", or 6" Backset
Custom narrow and large backsets also available

Operation*:
2001 SDL-1 By Key Outside Only
2001 SDL-2 By Key Outside and Inside
2001 SDL-3 By Key Outside, Thumb turn Inside
2001 SDL-4 By Thumb turn Inside Only
2001 SDL-5 By Thumb turn Inside, Emergency key Outside

** Numbers are for specification and door preparation purposes. The lock itself is the same for all operations.*



CASE:

Heavy Gauge, Wrought
(11/16" thick)

DEAD BOLT:

1/2" thick, 1 7/32" high, 1" Throw

THUMB TURN HUB:

3/16" (5mm) on the diamond

ARMOR FRONT:

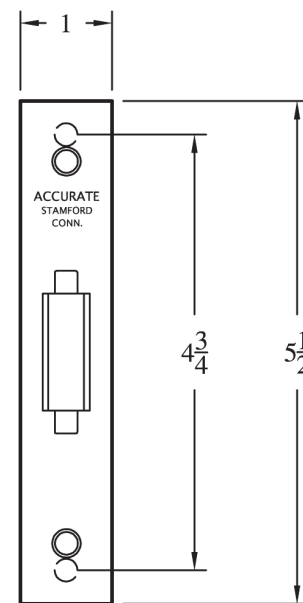
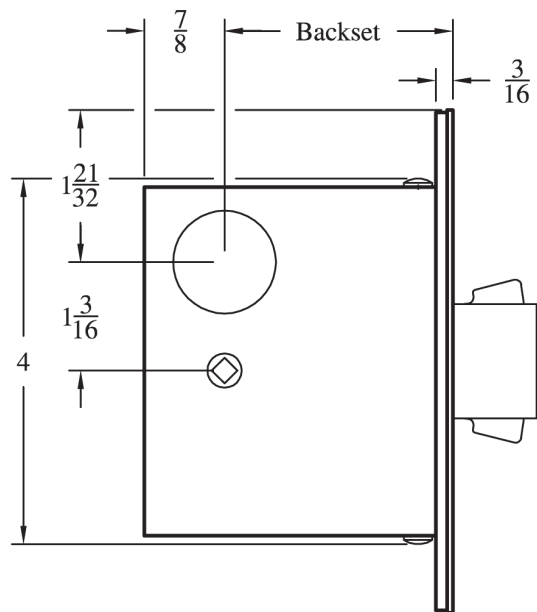
Brass, bronze or stainless steel.

DUST BOX:

Brass, stainless steel or US10B
available upon request

CYLINDER:

Available to order (3/4", 1", 1 1/8"
length in limited Keyways) - Please
contact one of our Sales Engineers
for Details



SUGGESTED TRIM:

	SDL-1	SDL-2	SDL-3	SDL-4	SDL-5
Inside	Optional: A2002B, O2002B, N2002B, S2002B	A2002C, O2002C, N2002C, S2002C	A2002T, O2002T, N2002T, S2002T	A2002T, O2002T, N2002T, S2002T	A2002T, O2002T, N2002T, S2002T
Outside	A2002C, O2002C, N2002C, S2002C	A2002C, O2002C, N2002C, S2002C	A2002C, O2002C, N2002C, S2002C	Optional: A2002B, O2002B, N2002B, S2002B	A2002E, O2002E, N2002E, S2002E

In addition to the above flush pulls (also available with concealed screws), please refer to our 24R and 24S flush cups for more trim options.

2002 Pocket Door Lock / Pull (#2002CPDL)



Various backsets to meet your requirements

Please specify
2 1/2", 2 3/4", 3 3/4", 5", or 6" Backset
Custom narrow and large backsets also available

Operation*:
2002 CPDL-1 By Key Outside Only
2002 CPDL-2 By Key Outside and Inside
2002 CPDL-3 By Key Outside, Thumb turn Inside
2002 CPDL-4 By Thumb turn Inside Only
2002 CPDL-5 By Thumb turn Inside, Emergency key Outside

**Numbers are for specification and door preparation purposes. The lock itself is the same for all operations.*



CASE:

Heavy Gauge, Wrought (11/16" thick)

DEAD BOLT:

1/2" thick, 1 7/32" high, 1" Throw

PULL:

1/2" thick, 2" high, 1 1/4" throw

THUMB TURN HUB:

3/16" (5mm) on the diamond

STRIKE:

Single doors: 3 1/2" x 1" (dust box available)

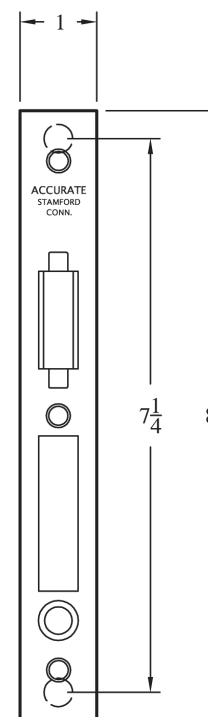
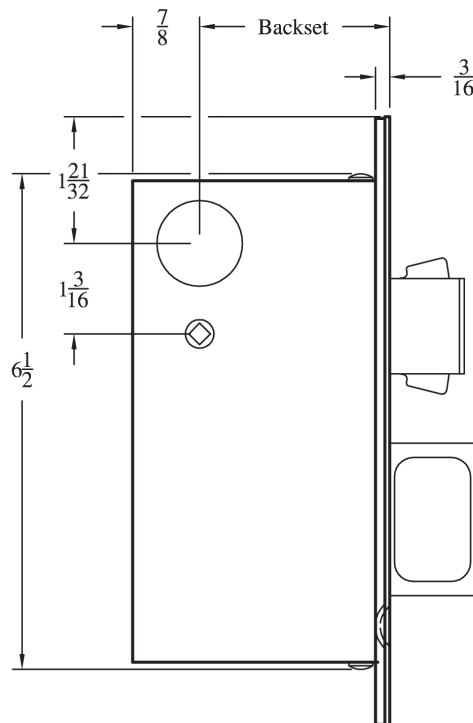
Double doors: refer to #2002CPDS

ARMOR FRONT:

Brass, bronze or stainless steel.

CYLINDER:

Available to order (3/4", 1", 1 1/8" length in limited Keyways) - Please contact one of our Sales Engineers for Details



SUGGESTED TRIM:	CPDL-1	CPDL-2	CPDL-3	CPDL-4	CPDL-5
Inside	Optional: A2002B, O2002B, N2002B, S2002B	A2002C, O2002C, N2002C, S2002C	A2002T, O2002T, N2002T, S2002T	A2002T, O2002T, N2002T, S2002T	A2002T, O2002T, N2002T, S2002T
Outside	A2002C, O2002C, N2002C, S2002C	A2002C, O2002C, N2002C, S2002C	A2002C, O2002C, N2002C, S2002C	Optional: A2002B, O2002B, N2002B, S2002B	A2002E, O2002E, N2002E, S2002E

In addition to the above flush pulls (also available with concealed screws), please refer to our 24R and 24S flush cups for more trim options.

2002 Pocket Door Strike / Pull (#2002CPDS)

Accurate

Lock and Hardware

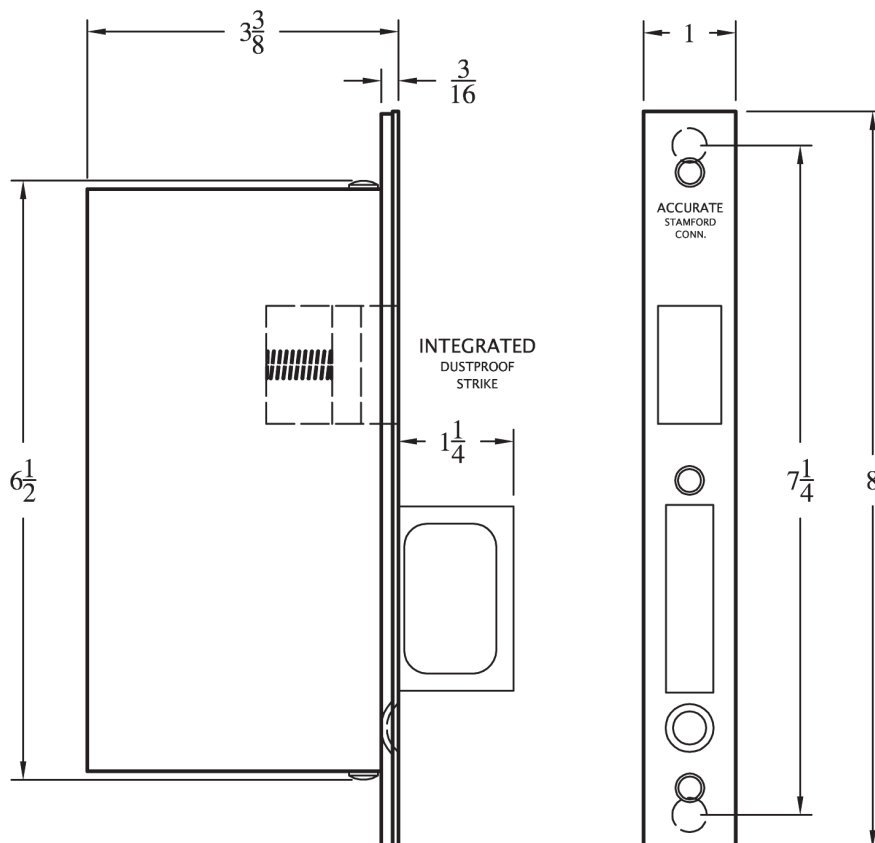
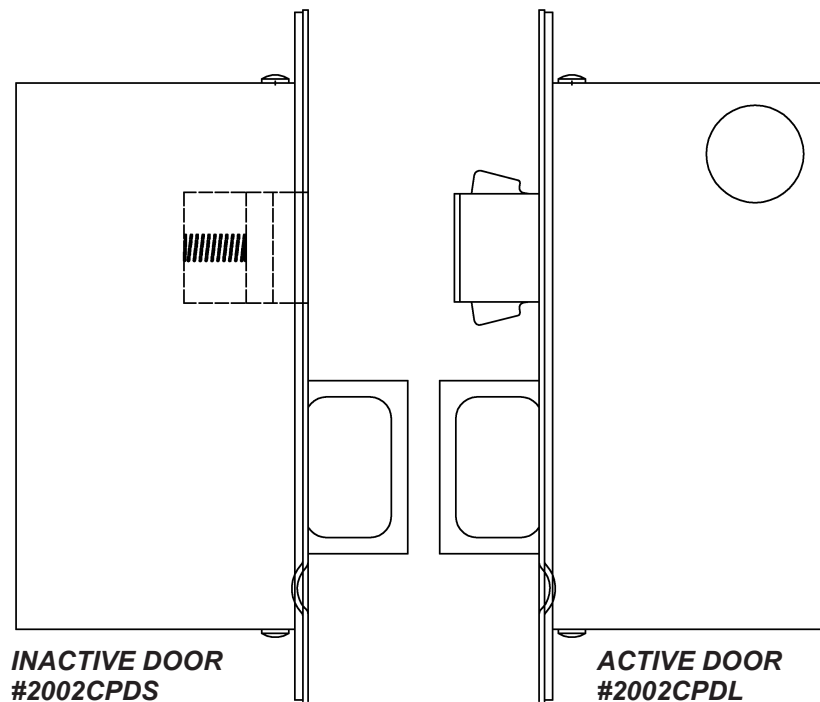
For use in double door applications, opposing our #2002CPDL pocket door lock/pull

SUGGESTED
TRIM FOR
INSIDE AND
OUTSIDE:

A2002B,
O2002B,
N2002B, or
S2002B

*In addition to the
above flush pulls
(also available with
concealed screws),
please refer to our
24R and 24S flush
cups for more trim
options.*

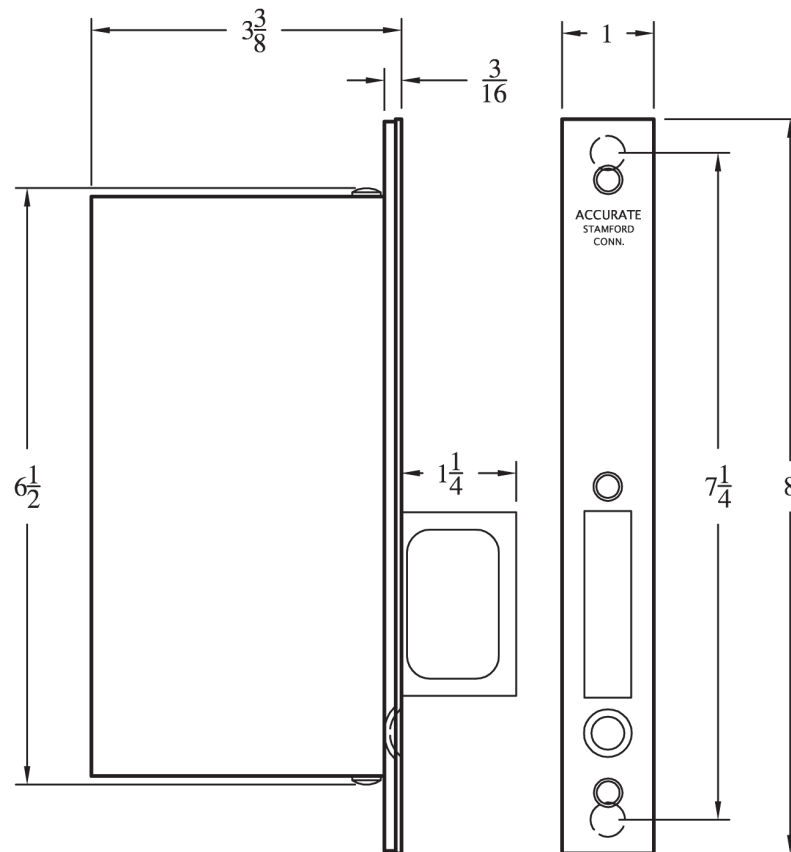
SUGGESTED
TRIM:
Please refer to
the **2002 Pocket
Door Lock / Pull
(#2002CPDL)**
catalog page



2002 Pocket Door Pull Only (#2002CPDP)



Spring loaded edge pull (similar in operation to our #2000 pull, except taller)



SUGGESTED TRIM FOR INSIDE AND OUTSIDE: A2002B, O2002B, N2002B, or S2002B

In addition to the above flush pulls (also available with concealed screws), please refer to our 24R and 24S flush cups for more trim options.

1 Annie Place • Stamford, CT 06902 • P: 203.348.8865 • F: 203.348.5234 • E: sales@accuratelockandhardware.com

MADE IN USA

2002 Flush Pulls: "S" style (#S2002)

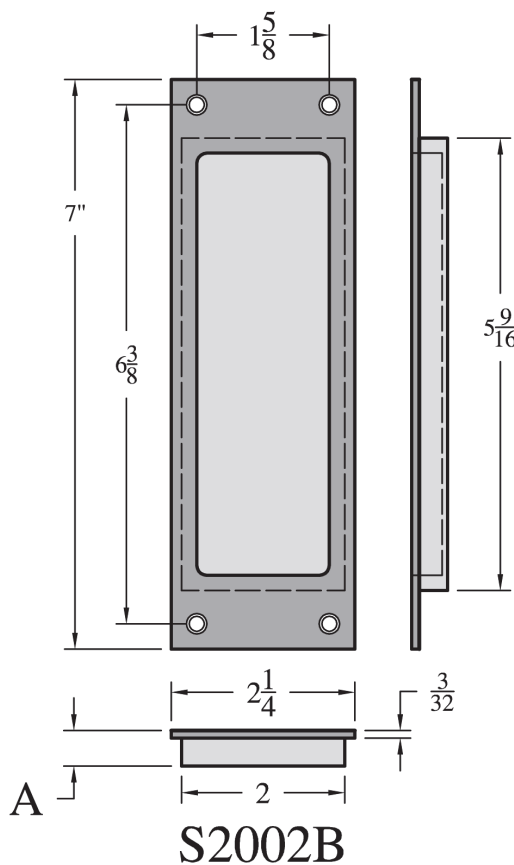


Premium flush pulls made out of solid brass or bronze and finished as required

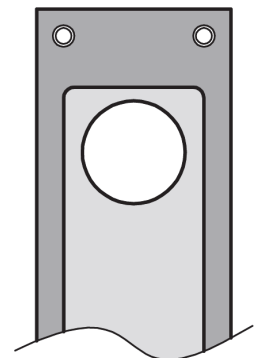
For use on 1 3/8", 1 3/4" or thicker doors—Please specify

Available in four functions to work with the #2000, #2001, #2002 sliding/pocket door locks:

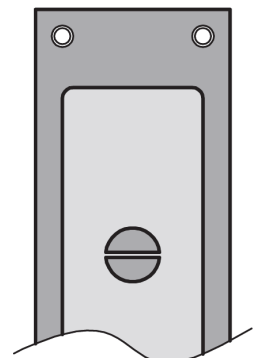
S2002B (blank / passage)
S2002C (for use with cylinders)
S2002E (ER key)
S2002T (thumb turn)



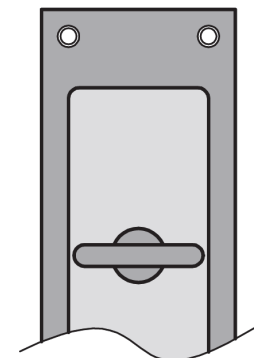
A 7/16" for doors 1 3/4" minimum
11/32" for doors 1 3/8" minimum



S2002C



S2002E



S2002T

2002 Flush Pulls: "O" style (#O2002)

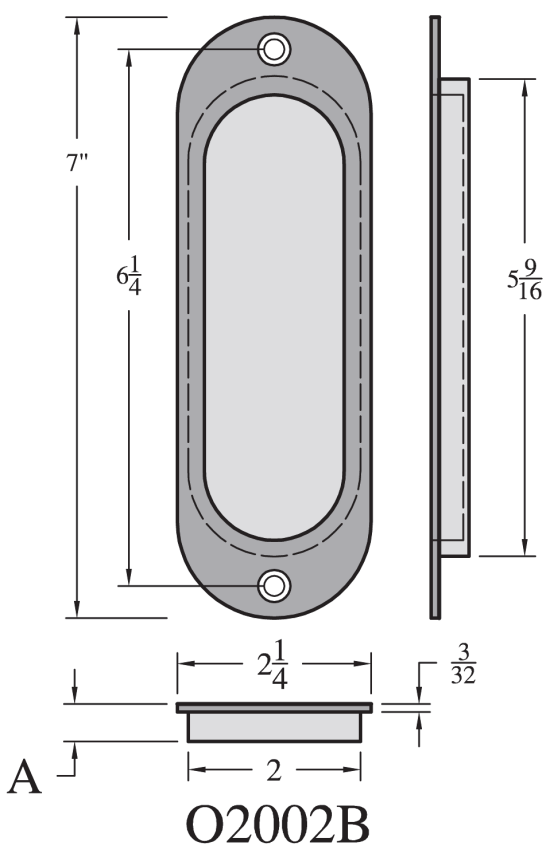


Premium flush pulls made out of solid brass or bronze and finished as required

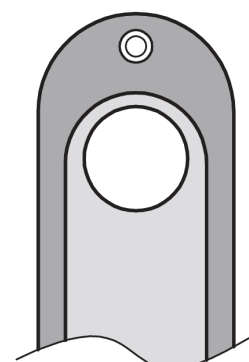
For use on 1 3/8", 1 3/4" or thicker doors—Please specify

Available in four functions to work with the #2000, #2001, #2002 sliding/pocket door locks:

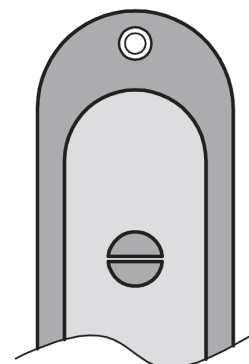
O2002B (blank / passage)
O2002C (for use with cylinders)
O2002E (ER key)
O2002T (thumb turn)



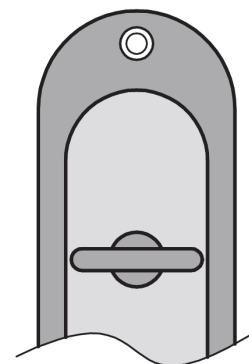
A 7/16" for doors 1 3/4" minimum
11/32" for doors 1 3/8" minimum



O2002C



O2002E



O2002T

2002 Flush Pulls: "N" style (#N2002)

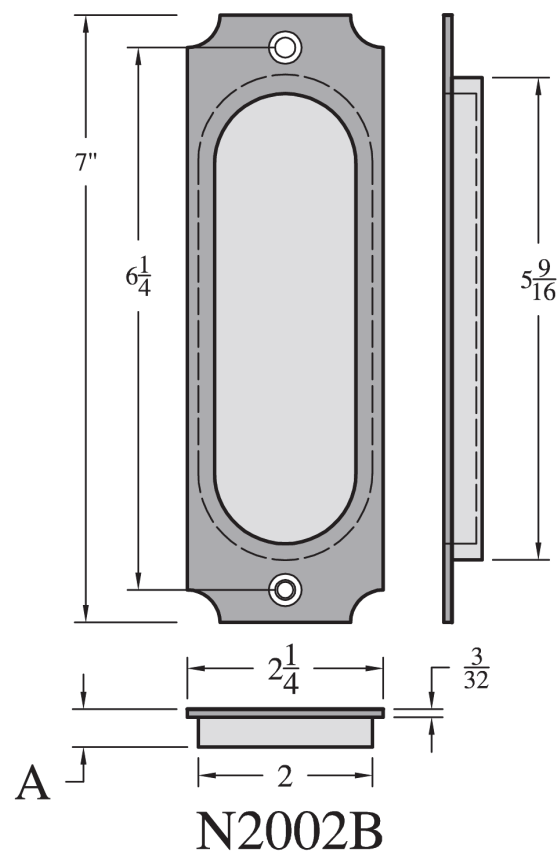
Accurate
Lock and Hardware

Premium flush pulls made out of solid brass or bronze and finished as required

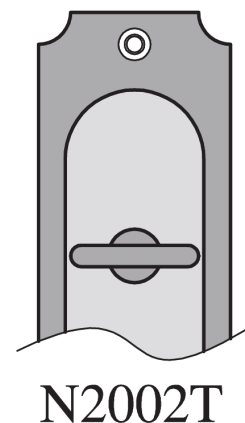
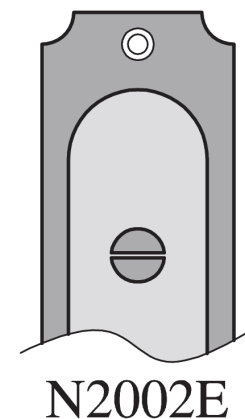
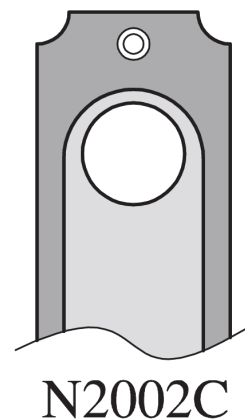
For use on 1 3/8", 1 3/4" or thicker doors—Please specify

Available in four functions to work with the #2000, #2001, #2002 sliding/pocket door locks:

N2002B (blank / passage)
N2002C (for use with cylinders)
N2002E (ER key)
N2002T (thumb turn)



A 7/16" for doors 1 3/4" minimum
11/32" for doors 1 3/8" minimum



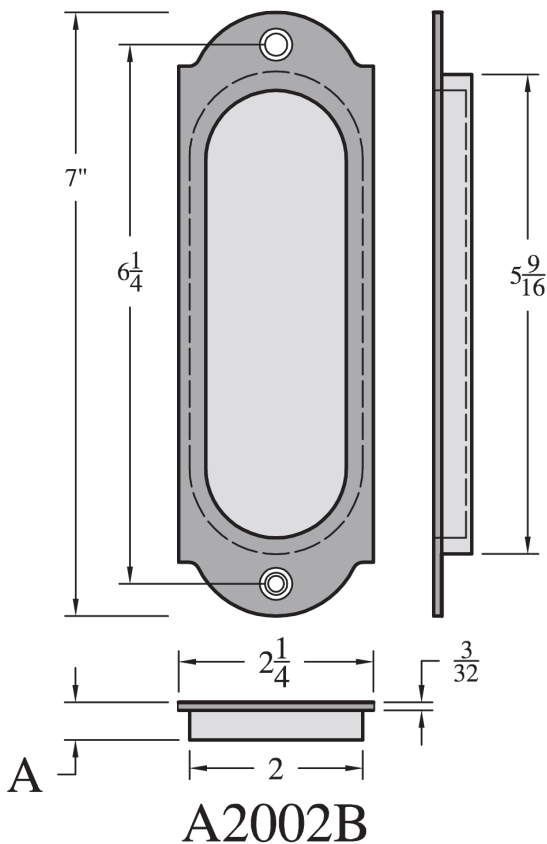
2002 Flush Pulls: "A" style (#A2002)

Premium flush pulls made out of solid brass or bronze and finished as required

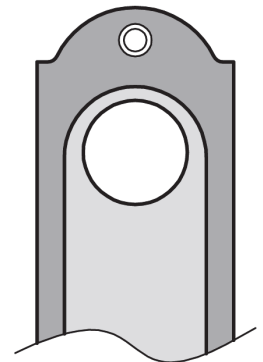
For use on 1 3/8", 1 3/4" or thicker doors—Please specify

Available in four functions to work with the #2000, #2001, #2002 sliding/pocket door locks:

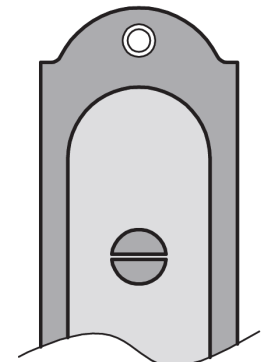
A2002B (blank / passage)
A2002C (for use with cylinders)
A2002E (ER key)
A2002T (thumb turn)



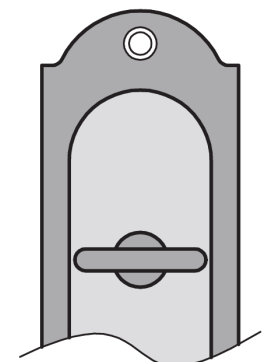
A 7/16" for doors 1 3/4" minimum
11/32" for doors 1 3/8" minimum



A2002C



A2002E



A2002T

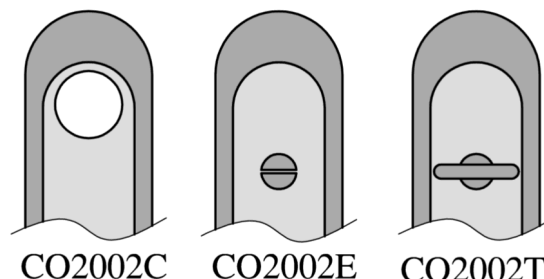
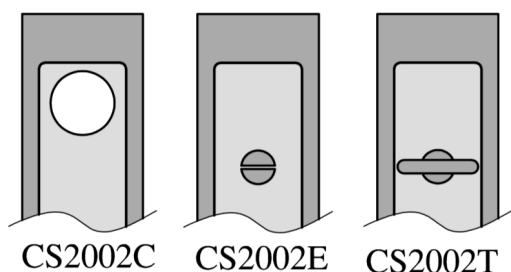
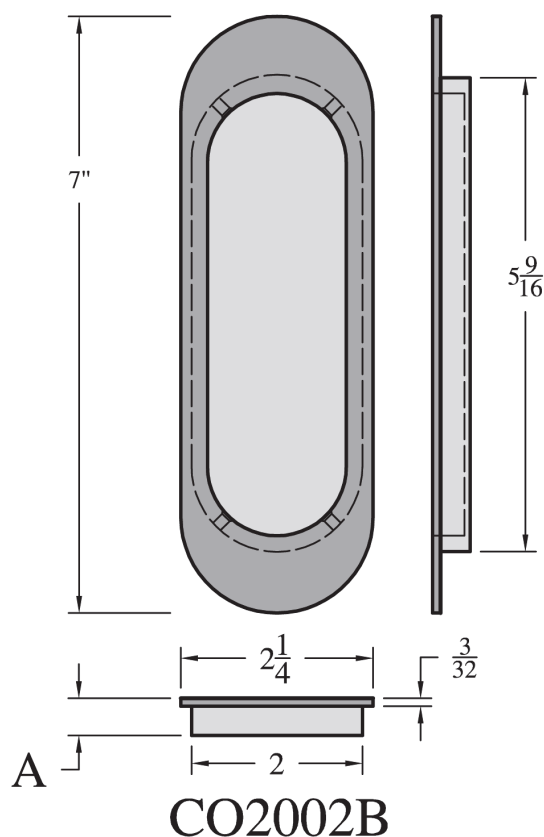
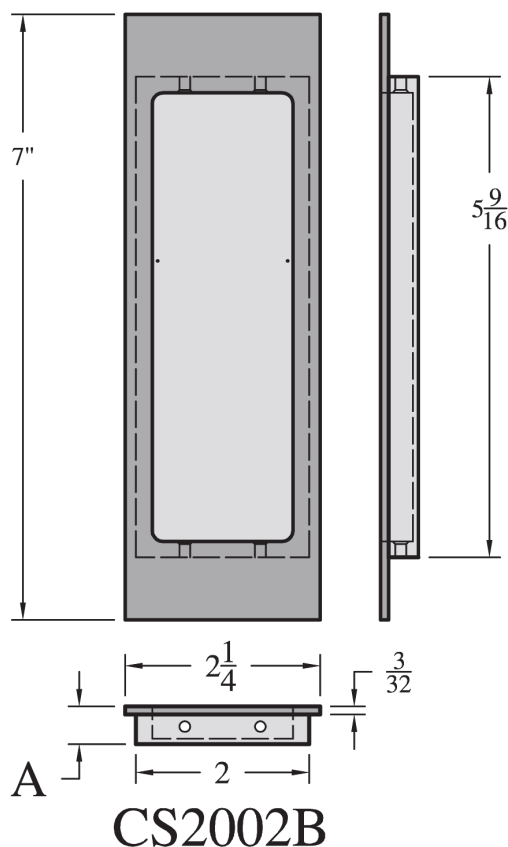
2002 Flush Pulls with Concealed Screws



Premium flush pulls made out of solid brass or bronze and finished as required

Similar to the standard 2002 flush pulls except with concealed screws

For use on doors 1 3/4" thick or greater—Please specify



A 7/16" for doors 1 3/4" minimum

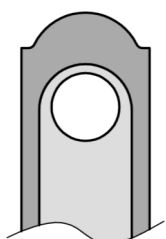
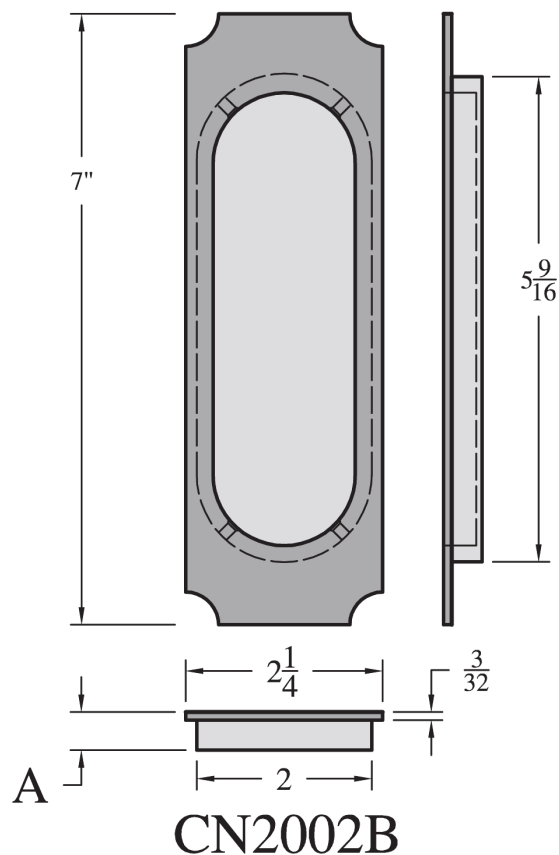
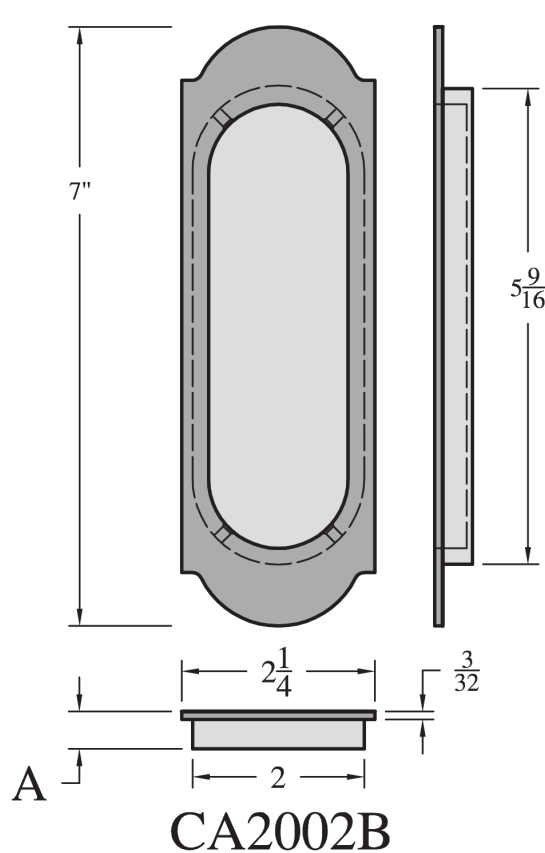
2002 Flush Pulls with Concealed Screws



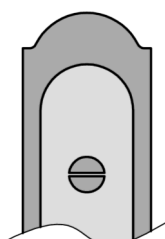
Premium flush pulls made out of solid brass or bronze and finished as required

Similar to the standard 2002 flush pulls except with concealed screws

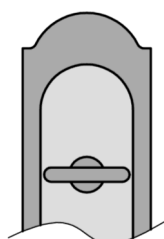
For use on doors 1 3/4" thick or greater—Please specify



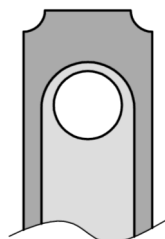
CA2002C



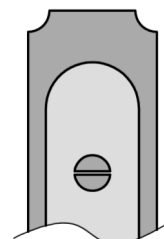
CA2002E



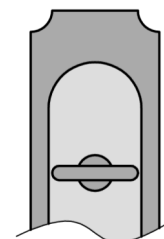
CA2002T



CN2002C



CN2002E



CN2002T

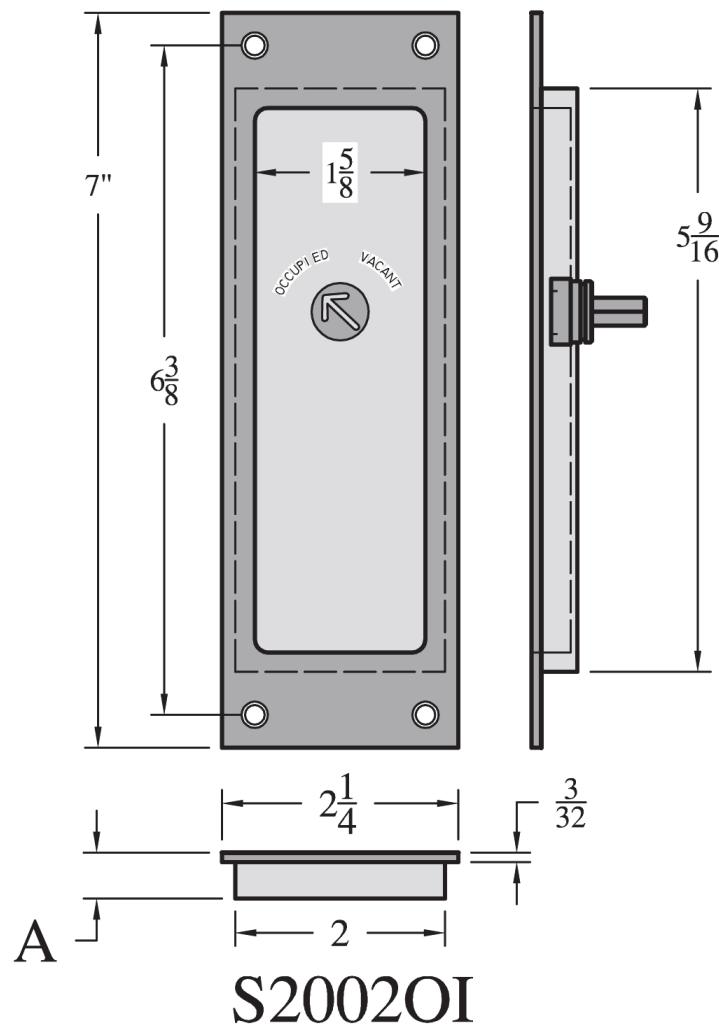
A 7/16" for doors 1 3/4" minimum

2002 Flush Pulls with “Occupancy Indicator”

Available in all 2002 flush pulls' styles -please specify

Engraved Occupied / Vacant

Handed



A $7/16"$ for doors $1\frac{3}{4}"$ minimum
 $11/32"$ for doors $1\frac{3}{8}"$ minimum

24R Flush Pulls

Premium flush pulls made out of solid brass or bronze and finished as required

For use on 1 3/8", 1 3/4" or thicker doors—Please specify

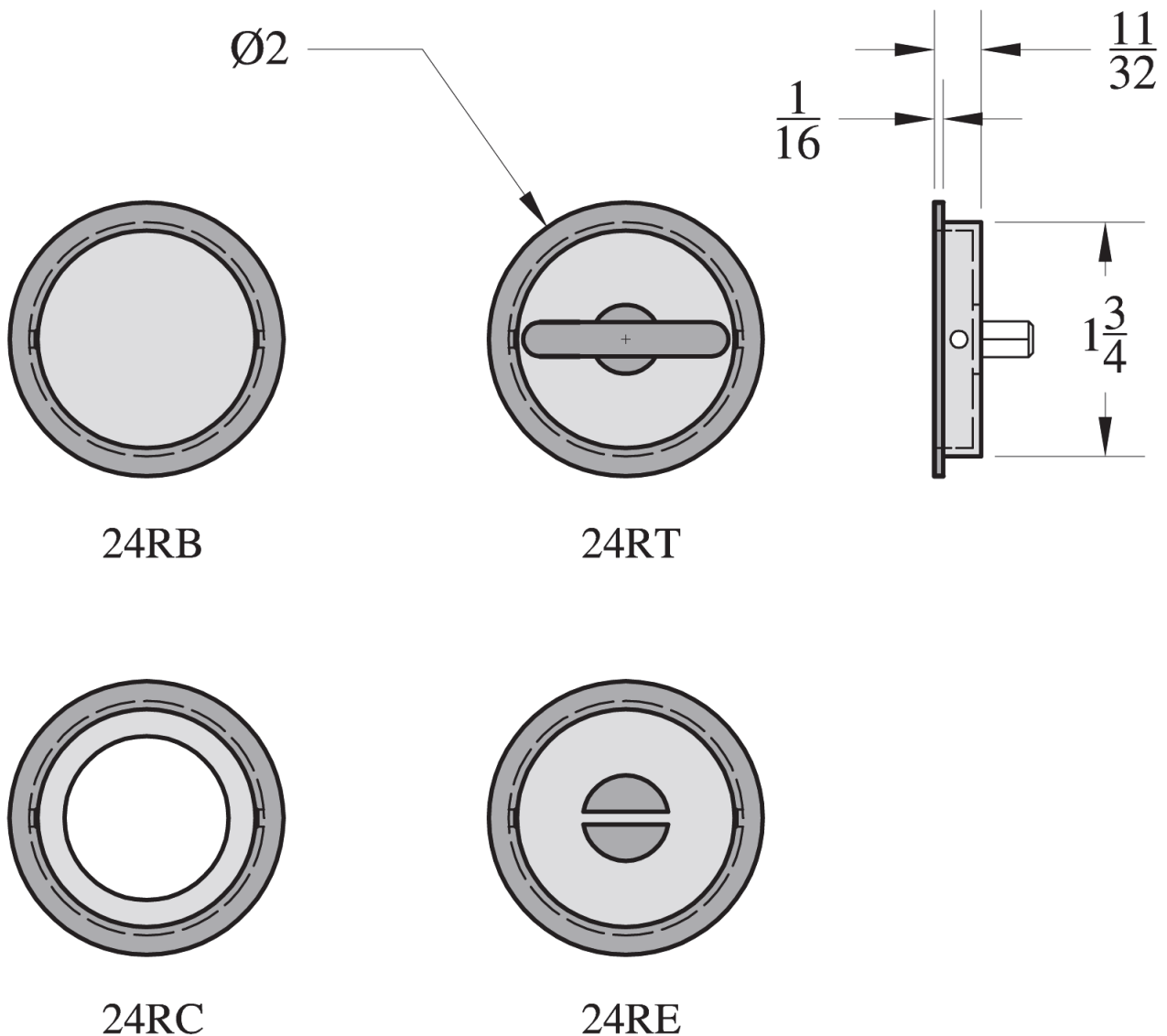
Available in four functions to work with the #2000, #2001, #2002 sliding/pocket door locks:

24RB (blank / passage)

24RC (for use with cylinders)

24RE (ER key)

24RT (thumb turn)



24S Flush Pulls

Premium flush pulls made out of solid brass or bronze and finished as required

For use on 1 3/8", 1 3/4" or thicker doors—Please specify

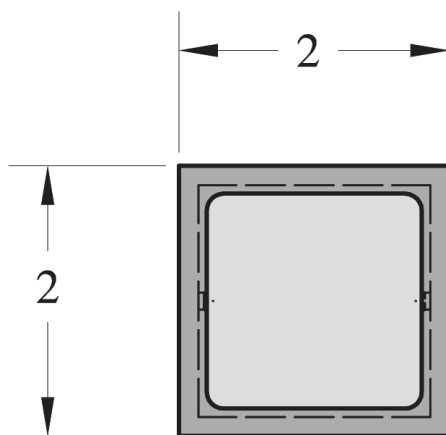
Available in four functions to work with the #2000, #2001, #2002 sliding/pocket door locks:

24SB (blank / passage)

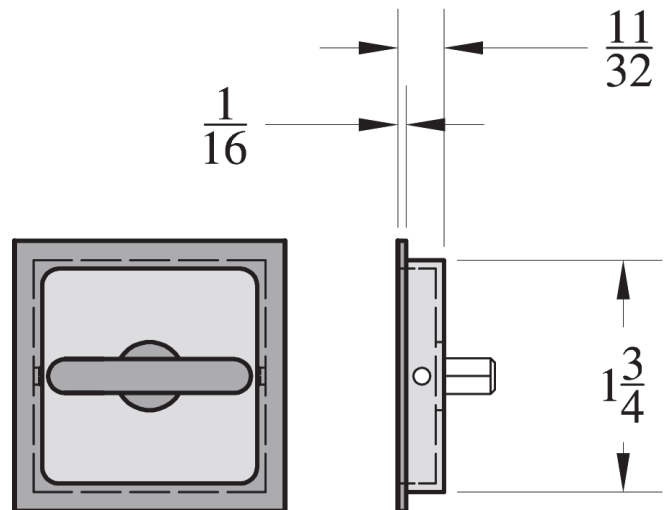
24SC (for use with cylinders)

24SE (ER key)

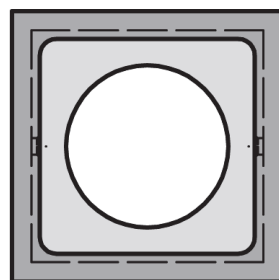
24ST (thumb turn)



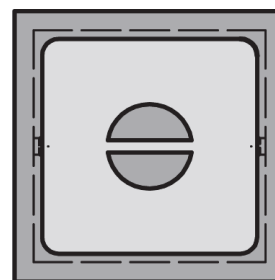
24SB



24ST



24SC



24SE

Pocket Door Hardware

For ANSI 161 door preparations

Premium Pocket Door Privacy sets

- 2 3/8" or 2 3/4" backset
- For 1 3/8" or 1 3/4" thick interior privacy pocket doors
- Fit standard 161 door preparation (2 1/8" diameter cross bore)
- Standard and custom finishes available
- Two styles offered: S161 or R161

S-161



SD SET S-161 (for single doors)

PD SET S-161 (for pair of doors)
- set includes a pair of blank flush pulls for the "inactive" door

Available in 2 3/8" and 2 3/4" backsets

R-161



SD SET R-161 (for single doors)

PD SET R-161 (for pair of doors)
- set includes a pair of blank flush pulls for the "inactive" door

Available in 2 3/8" and 2 3/4" backsets

Pocket Door Hardware For ANSI 161 door preparations

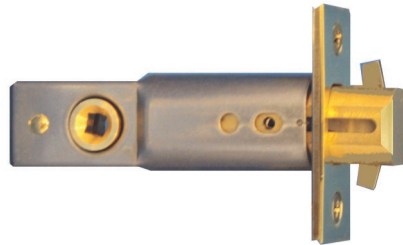


161PDL Pocket door lock

2 3/8" or 2 3/4" backset
(custom backsets also available)

Designed to fit the ANSI 161 preparation
(2 1/8" diameter cross bore)

For 1 3/8" or 1 3/4" interior privacy pocket doors



CASE:

1" diameter, fits 161 prep

THUMB TURN HUB:

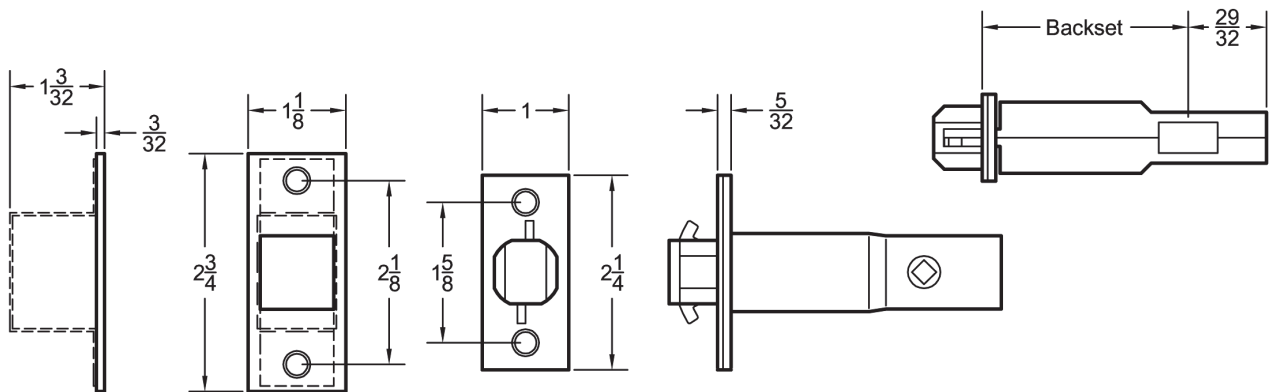
3/16" (5mm) on the diamond

STRIKE:

1 1/8" x 2 3/4"

ARMOR FRONT:

Brass, bronze or stainless steel (1" x 2 1/4")

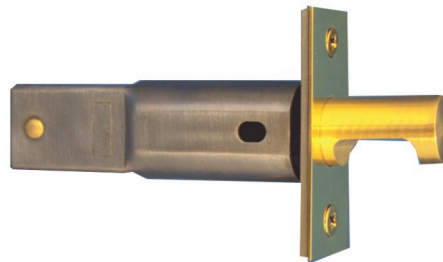


161PDP Pocket door pull

Designed to fit the ANSI 161 preparation*

For 1 3/8" or 1 3/4" pocket doors

* 2 1/8" diameter cross bore preparation
required only when pull used as a passage
(without 161PDL)



CASE:

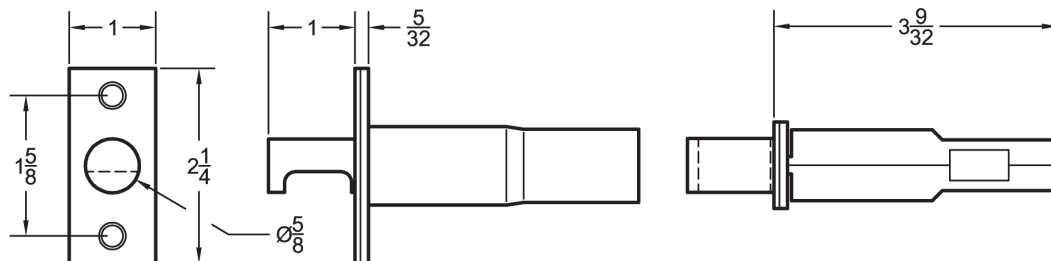
1" diameter, fits 161 prep

PULL:

5/8" diameter
Spring loaded
Push to project pull

ARMOR FRONT:

Brass, bronze or stainless steel (1" x 2 1/4")

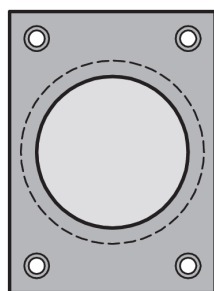


Pocket Door Hardware For ANSI 161 door preparations

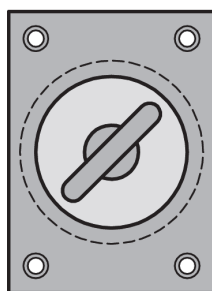


S161 Flush Pulls

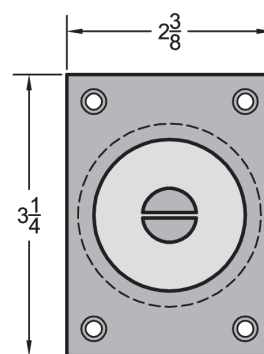
- Premium flush pulls made out of solid brass—standard and custom finishes available
- For 1 3/8" or 1 3/4" pocket doors
- For use with #161PDL lock: S161E (ER key) x S161T (thumb turn)
- For use with #161PDP pull: pair of S161B (blank / passage)



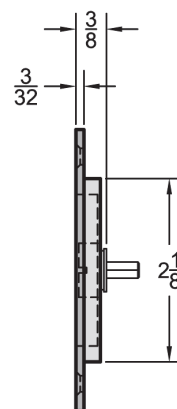
S161B



S161T

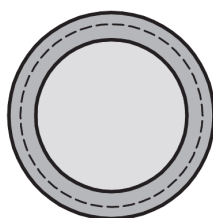


S161E

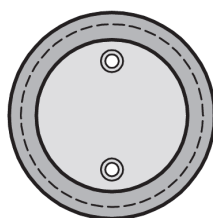


R161 Flush Pulls

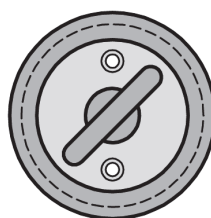
- Premium flush pulls made out of solid brass—standard and custom finishes available
- For 1 3/8" or 1 3/4" pocket doors
- For use with #161PDL lock: R161E (ER key) x R161T (thumb turn)
- For use with #161PDP pull: pair of R161B (blank / passage)



R161B (pair)



R161T



R161E

